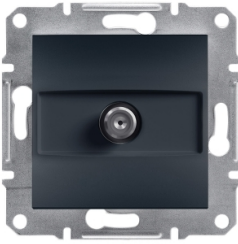


# Product data sheet

Specifications



## Asfora, SAT socket ending, 1dB, anthracite

EPH3700171

### Main

Range	Asfora
Product or component type	SAT socket
Device presentation	Mechanism with fixing frame
TV socket type	End-of-line (terminal socket)
Wiring device additional information	For parallel distribution systems For series distribution systems
Type of packing	Flow-pack

### Complementary

Device mounting	Flush
Fixing mode	Claws51...80 mm
Socket number	1
SAT connector	F type
Attenuation	1 dB
Colour tint	Anthracite
Surface finish	Painted
Material	ABS (acrylonitrile butadiene-styrene): central plate
DC current flow	In SAT socket
Number per line	1
Connections - terminals	Screwless terminals
Conductor material	Copper
Height	71 mm
Width	71 mm
Depth	42 mm
Projecting depth	13 mm
Net weight	0.075 kg
IP degree of protection	IP20

### Environment

Quality labels	CE
----------------	----

### Packing Units

<b>Unit Type of Package 1</b>	PCE
<b>Number of Units in Package 1</b>	1
<b>Package 1 Height</b>	4.500 cm
<b>Package 1 Width</b>	7.000 cm
<b>Package 1 Length</b>	7.000 cm
<b>Package 1 Weight</b>	72.000 g
<b>Unit Type of Package 2</b>	BB1
<b>Number of Units in Package 2</b>	10
<b>Package 2 Height</b>	9.500 cm
<b>Package 2 Width</b>	18.500 cm
<b>Package 2 Length</b>	27.500 cm
<b>Package 2 Weight</b>	796.000 g
<b>Unit Type of Package 3</b>	S04
<b>Number of Units in Package 3</b>	120
<b>Package 3 Height</b>	30.000 cm
<b>Package 3 Width</b>	40.000 cm
<b>Package 3 Length</b>	60.000 cm
<b>Package 3 Weight</b>	10.196 kg



## Environmental Data

Schneider Electric aims to achieve Net Zero status by 2050 through supply chain partnerships, lower impact materials, and circularity via our ongoing “Use Better, Use Longer, Use Again” campaign to extend product lifetimes and recyclability.

[Environmental Data explained >](#)

[How we assess product sustainability >](#)

### Environmental footprint

[Environmental Disclosure](#)

[Product Environmental Profile](#)

## Use Better

### Materials and Substances

[EU RoHS Directive](#)

Compliant

REACH Regulation

[REACH Declaration](#)

China RoHS Regulation

[China RoHS declaration](#)


## Use Again

### Repack and remanufacture

[Circularity Profile](#)

[End of Life Information](#)

WEEE

 The product must be disposed on European Union markets following specific waste collection and never end up in rubbish bins

Take-back

No