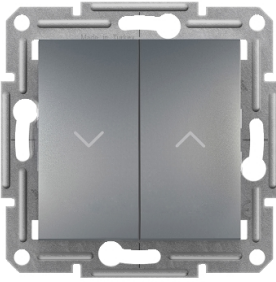


Product data sheet

Specifications



Roller blind switch, screwless terminals, wo frame, steel

EPH1300562

Main

Range	Asfora
Product or component type	Switch
Device presentation	Mechanism with fixing frame
Number of rocker	2
Switch function	Roller blind
Load type	Load for energy saving lamps with ballast: 100 W
Colour tint	Steel
Type of packing	Flow-pack

Complementary

Device mounting	Flush
Power range	2300 W
Rated current	10 AX at 250 V AC
Number of cables	2 cable(s) 2.5 mm ²
Cable stiffness	Flexible Rigid Solid stranded
Wire stripping length	13.0 mm
Material	ABS (acrylonitrile butadiene-styrene)
Surface finish	Painted
Conductor material	Copper
Fixing mode	Screws or claws 51...70 mm
Connections - terminals	Screwless terminals
Marking	UP-DOWN
Width	71 mm
Height	71 mm
Depth	43.0 mm
Projecting depth	15 mm
Net weight	0.06115 kg

Environment

Standards	IEC 60669-1
-----------	-------------

Product certifications	TSE VDE
Quality labels	CE UKR
IP degree of protection	IP20
Ambient air temperature for operation	-5...40 °C

Packing Units

Unit Type of Package 1	PCE
Number of Units in Package 1	1
Package 1 Height	4.000 cm
Package 1 Width	8.000 cm
Package 1 Length	8.000 cm
Package 1 Weight	62.000 g
Unit Type of Package 2	BB1
Number of Units in Package 2	10
Package 2 Height	9.500 cm
Package 2 Width	18.500 cm
Package 2 Length	27.500 cm
Package 2 Weight	697.000 g
Unit Type of Package 3	S04
Number of Units in Package 3	120
Package 3 Height	30.000 cm
Package 3 Width	40.000 cm
Package 3 Length	60.000 cm
Package 3 Weight	8.982 kg

Environmental Data

Schneider Electric aims to achieve Net Zero status by 2050 through supply chain partnerships, lower impact materials, and circularity via our ongoing "Use Better, Use Longer, Use Again" campaign to extend product lifetimes and recyclability.

[Environmental Data explained >](#)

[How we assess product sustainability >](#)

Environmental footprint

Carbon footprint (kg.eq.CO2 per CR, Total Life cycle)	1
---	---

Use Better

Materials and Substances

EU RoHS Directive	Compliant with Exemptions
-----------------------------------	---------------------------

REACH Regulation	REACH Declaration
------------------	-----------------------------------

China RoHS Regulation	China RoHS declaration
-----------------------	--

Use Again

Repack and remanufacture

Circularity Profile	No need of specific recycling operations
---------------------	--

WEEE	 The product must be disposed on European Union markets following specific waste collection and never end up in rubbish bins
------	---

Take-back	No
-----------	----