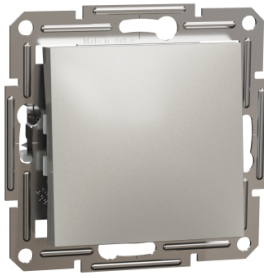


# Product data sheet

Specifications



## Asfora - 1 pole pushbutton, screwless terminals, wo frame, bronze

EPH0700169

### Main

Range	Asfora
Product or component type	Push-button
Device presentation	Mechanism with fixing frame
Number of rocker	1
Colour tint	Bronze
Type of packing	Flow-pack

### Complementary

Device mounting	Flush
Power range	2300 W
Rated current	10 A at 250 V AC
Number of cables	2 cable(s) 2.5 mm <sup>2</sup>
Cable stiffness	Flexible Rigid Solid stranded
Wire stripping length	13.0 mm
Material	ABS (acrylonitrile butadiene-styrene)
Surface finish	Painted
Conductor material	Copper
Fixing mode	Screws or claws51...70 mm
Connections - terminals	Screwless terminals
Width	71 mm
Height	71 mm
Depth	43.0 mm
Projecting depth	15 mm
Net weight	0.0586 kg

### Environment

Standards	IEC 60669-1
Product certifications	TSE VDE NF
Quality labels	CE UKR

<b>IP degree of protection</b>	IP20
<b>Ambient air temperature for operation</b>	-5...40 °C

## Packing Units

<b>Unit Type of Package 1</b>	PCE
<b>Number of Units in Package 1</b>	1
<b>Package 1 Height</b>	4.500 cm
<b>Package 1 Width</b>	7.000 cm
<b>Package 1 Length</b>	7.000 cm
<b>Package 1 Weight</b>	58.000 g
<b>Unit Type of Package 2</b>	BB1
<b>Number of Units in Package 2</b>	10
<b>Package 2 Height</b>	9.500 cm
<b>Package 2 Width</b>	18.500 cm
<b>Package 2 Length</b>	27.500 cm
<b>Package 2 Weight</b>	666.000 g
<b>Unit Type of Package 3</b>	S04
<b>Number of Units in Package 3</b>	120
<b>Package 3 Height</b>	30.000 cm
<b>Package 3 Width</b>	40.000 cm
<b>Package 3 Length</b>	60.000 cm
<b>Package 3 Weight</b>	8.533 kg



## Environmental Data

Schneider Electric aims to achieve Net Zero status by 2050 through supply chain partnerships, lower impact materials, and circularity via our ongoing “Use Better, Use Longer, Use Again” campaign to extend product lifetimes and recyclability.

[Environmental Data explained >](#)

[How we assess product sustainability >](#)

### Environmental footprint

Carbon footprint (kg.eq.CO2 per CR, Total Life cycle)	1
---	---

## Use Better

### Materials and Substances

<a href="#">EU RoHS Directive</a>	Compliant with Exemptions
-----------------------------------	---------------------------

REACH Regulation	<a href="#">REACH Declaration</a>
------------------	-----------------------------------

China RoHS Regulation	<a href="#">China RoHS declaration</a>
-----------------------	--

## Use Again

### Repack and remanufacture

Circularity Profile	No need of specific recycling operations
---------------------	--

WEEE	 The product must be disposed on European Union markets following specific waste collection and never end up in rubbish bins
------	---

Take-back	No
-----------	----