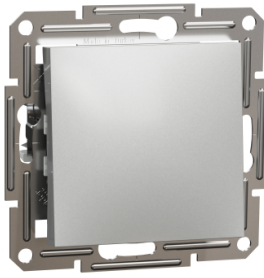


# Product data sheet

Specifications



## Asfora - 1 pole 2way switch, screwless terminals, wo frame, aluminium

EPH0400161

### Main

Range	Asfora
Product or component type	Switch
Device presentation	Mechanism with fixing frame
Number of rocker	1.0
Switch function	1-pole 2-way
Load type	Load for energy saving lamps with ballast: 100 W
Colour tint	Aluminium
Type of packing	Flow-pack

### Complementary

Device mounting	Flush
Power range	2300 W
Rated current	10 AX at 250 V AC
Number of cables	2 cable(s) 2.5 mm <sup>2</sup>
Cable stiffness	Flexible Rigid Solid stranded
Wire stripping length	13.0 mm
Material	ABS (acrylonitrile butadiene-styrene)
Surface finish	Painted
Conductor material	Copper
Fixing mode	Screws or claws 51...70 mm
Connections - terminals	Screwless terminals
Width	71 mm
Height	71 mm
Depth	43.0 mm
Projecting depth	15 mm
Net weight	0.05975 kg

### Environment

Standards	IEC 60669-1
-----------	-------------

Disclaimer: This documentation is not intended as a substitute for and is not to be used for determining suitability or reliability of these products for specific user applications

<b>Product certifications</b>	TSE VDE NF
<b>Quality labels</b>	CE UKR
<b>IP degree of protection</b>	IP20
<b>Ambient air temperature for operation</b>	-5...40 °C

## Packing Units

<b>Unit Type of Package 1</b>	PCE
<b>Number of Units in Package 1</b>	1
<b>Package 1 Height</b>	5.2 cm
<b>Package 1 Width</b>	8.1 cm
<b>Package 1 Length</b>	8.9 cm
<b>Package 1 Weight</b>	66.0 g
<b>Unit Type of Package 2</b>	BB1
<b>Number of Units in Package 2</b>	10
<b>Package 2 Height</b>	9.2 cm
<b>Package 2 Width</b>	18.6 cm
<b>Package 2 Length</b>	27.7 cm
<b>Package 2 Weight</b>	765.0 g
<b>Unit Type of Package 3</b>	S04
<b>Number of Units in Package 3</b>	120
<b>Package 3 Height</b>	30.0 cm
<b>Package 3 Width</b>	40.0 cm
<b>Package 3 Length</b>	60.0 cm
<b>Package 3 Weight</b>	9.883 kg

## Environmental Data

Schneider Electric aims to achieve Net Zero status by 2050 through supply chain partnerships, lower impact materials, and circularity via our ongoing “Use Better, Use Longer, Use Again” campaign to extend product lifetimes and recyclability.

[Environmental Data explained >](#)

[How we assess product sustainability >](#)

### Environmental footprint

Carbon footprint (kg.eq.CO2 per CR, Total Life cycle)	1
---	---

## Use Better

### Materials and Substances

<a href="#">EU RoHS Directive</a>	Compliant with Exemptions
-----------------------------------	---------------------------

REACH Regulation	<a href="#">REACH Declaration</a>
------------------	-----------------------------------

China RoHS Regulation	<a href="#">China RoHS declaration</a>
-----------------------	--

## Use Again

### Repack and remanufacture

Circularity Profile	No need of specific recycling operations
---------------------	--

WEEE	 The product must be disposed on European Union markets following specific waste collection and never end up in rubbish bins
------	---

Take-back	No
-----------	----